

WHAT IS A SPACEPORT?

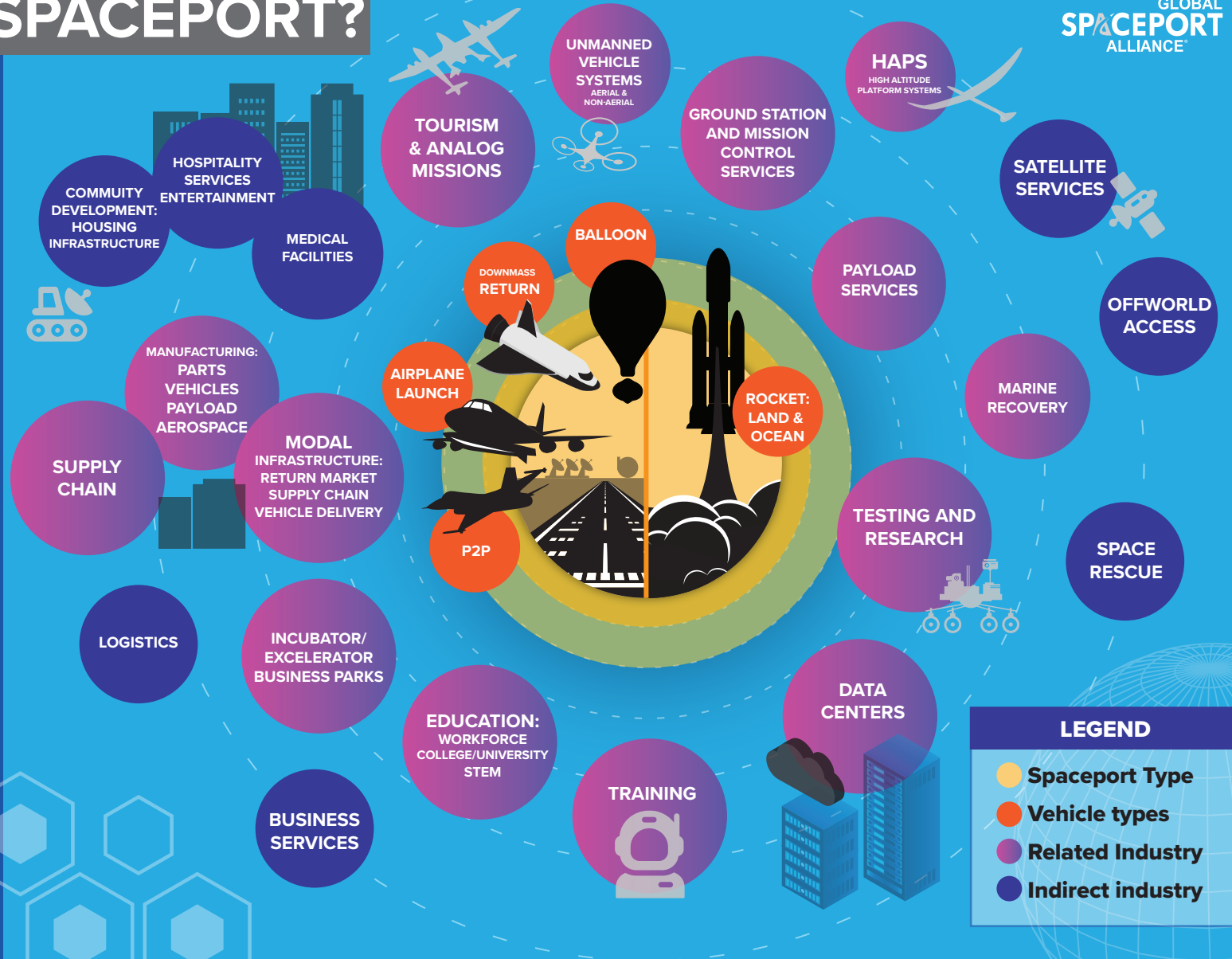
A spaceport is more than a launch site - *it is a hub of INNOVATION, COMMERCE, and EXPLORATION.*

Modern spaceports come in a variety of forms:

- horizontal
- vertical
- ocean-based platforms

Each version supporting a wide range of activities from launch to downmass return to vehicle testing and payload integration to manufacturing and ground station operations.

Their impact radiates into the community and support several indirect industries such as *hospitality, business services, and more.*



Beyond facilitating space access, spaceports drive economic growth, foster education and research programs, and host analog missions, incubators, and accelerators.

They often function as international business parks, surrounded by hospitality, services, supply chains, multi-modal transport, and immersive space experiences. Spaceports also enable critical research opportunities, from microgravity studies to downmass return operations, connecting universities, companies, and the broader community to the emerging space economy.